



Dimensions

Height	1 754 mm
Width	1 350 mm
Length	1 780 mm
Approx Weight	1 400 kg
Motor Power	18.5kW
Main Shaft Speed	83r/min
Rotor-knives	28+4 pcs

Cutting Chamber

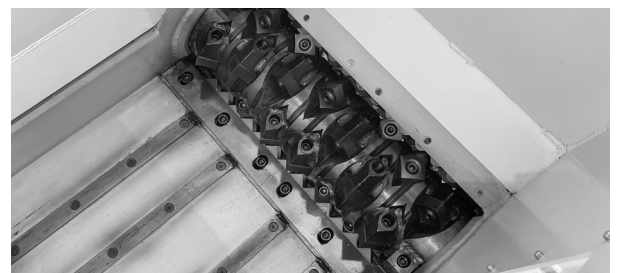
Length	857 mm
Width	602 mm

Features

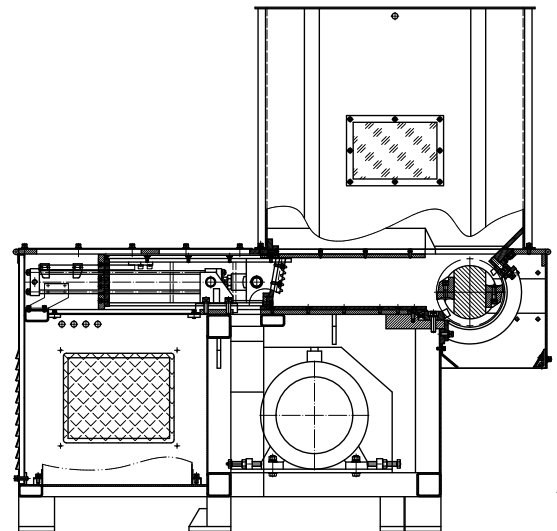
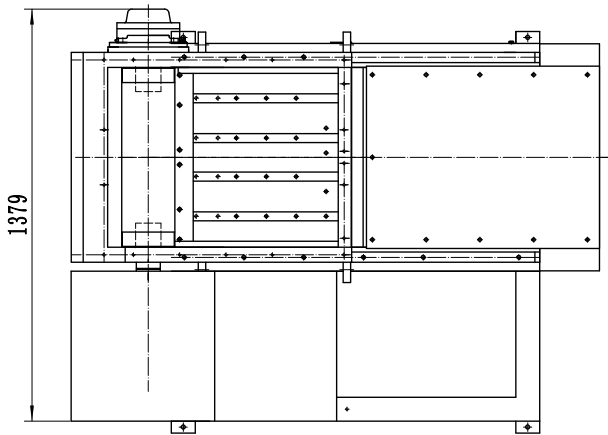
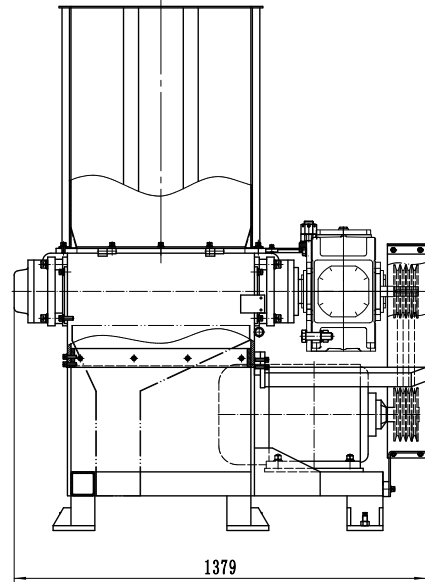
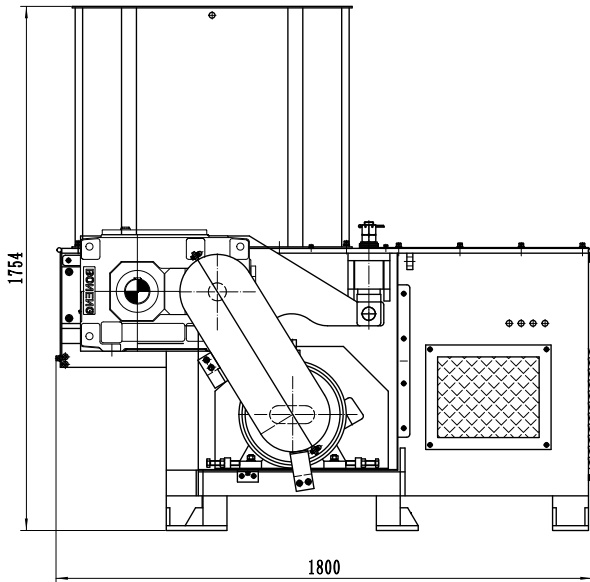
- Pusher ram introducing the material to the cutting rotor
- Hardened steel rotor knives
- Integrated shock absorbers
- Material sizing screens
- Built in hydraulic power pack
- Suitable for Cardboard, Plastic, Paper, Timber and Cans
- Auto Reverse Protection
- Easy Maintenance
- Reliable & Durable Construction

Optional Extras

- Additional Force Feeding Ram
- Film Rotor
- Hard Material Rotor
- Custom Hopper Designs
- In-Feed and Out Feed Conveyors
- Elevated work and loading platforms



Dimensions and technical information without obligation. Subject to change.



Size Comparison



Shaft Speed
83 (r/min)



Rotor Knife
28 +4 (pcs)



Motor
18.5kW



Waste Types
Cardboard, Plastic
Film, Wood, Paper,
Cans, E-Waste, RDF ...

