

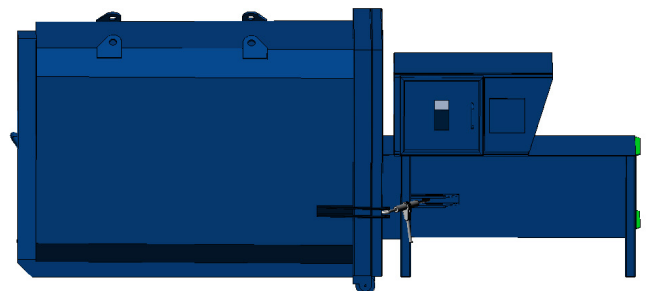


Dimensions

| | |
|------------------|-----------------------------|
| Height | 1 750mm |
| Width | 756mm |
| Length | 2 150mm |
| Bin penetration | 300mm |
| Chamber Volume | 0.25m ³ |
| Swept Volume | 0.20m ³ |
| Loading height | 1 020mm |
| Motor | 4kW |
| Power Supply | 415V 3 Phase |
| Cycle Time | 31 seconds (optional 18) |
| Compaction Force | Up to 10T |

Features

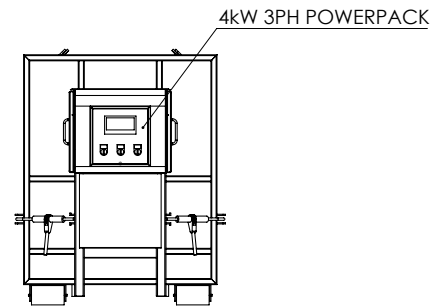
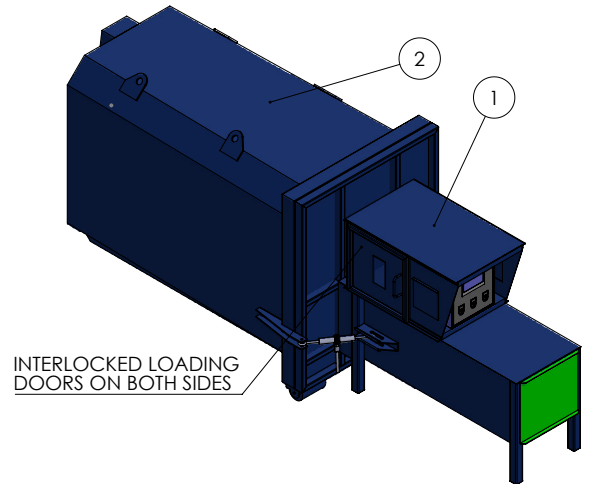
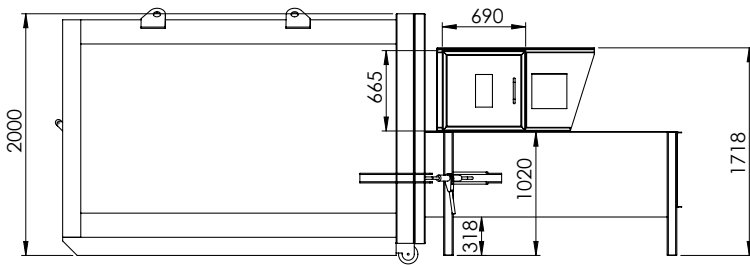
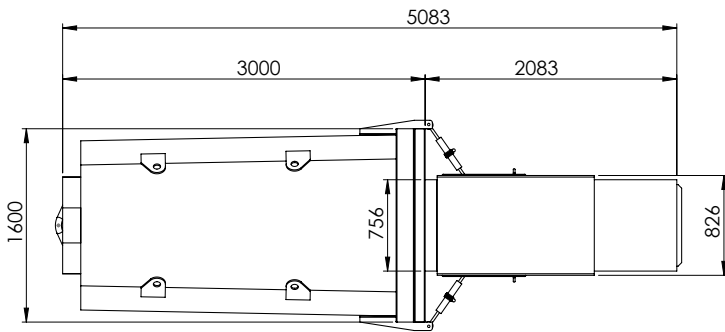
- Compact design – fits in a standard car space
- Powerful compaction force
- Easy & safe to operate
- Loading of materials from each side
- Suitable for a wide range of waste materials
- Directly compact into front lift 3m³ bin
- Heavy duty construction



Optional Extras

- Fast cycle options from 18–31 seconds
- Custom hopper design
- Mobile castors or fixed legs
- Bin tipper for 120L wheeled carts
- Range of container sizes and lift options

Dimensions and technical information without obligation. Subject to change.



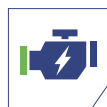
Size Comparison



Compaction Ratio
Up to 6:1



Pressing Force
Up to 10 Ton



Motor
4kW



Waste Types
General Waste,
Cardboard, Plastic

