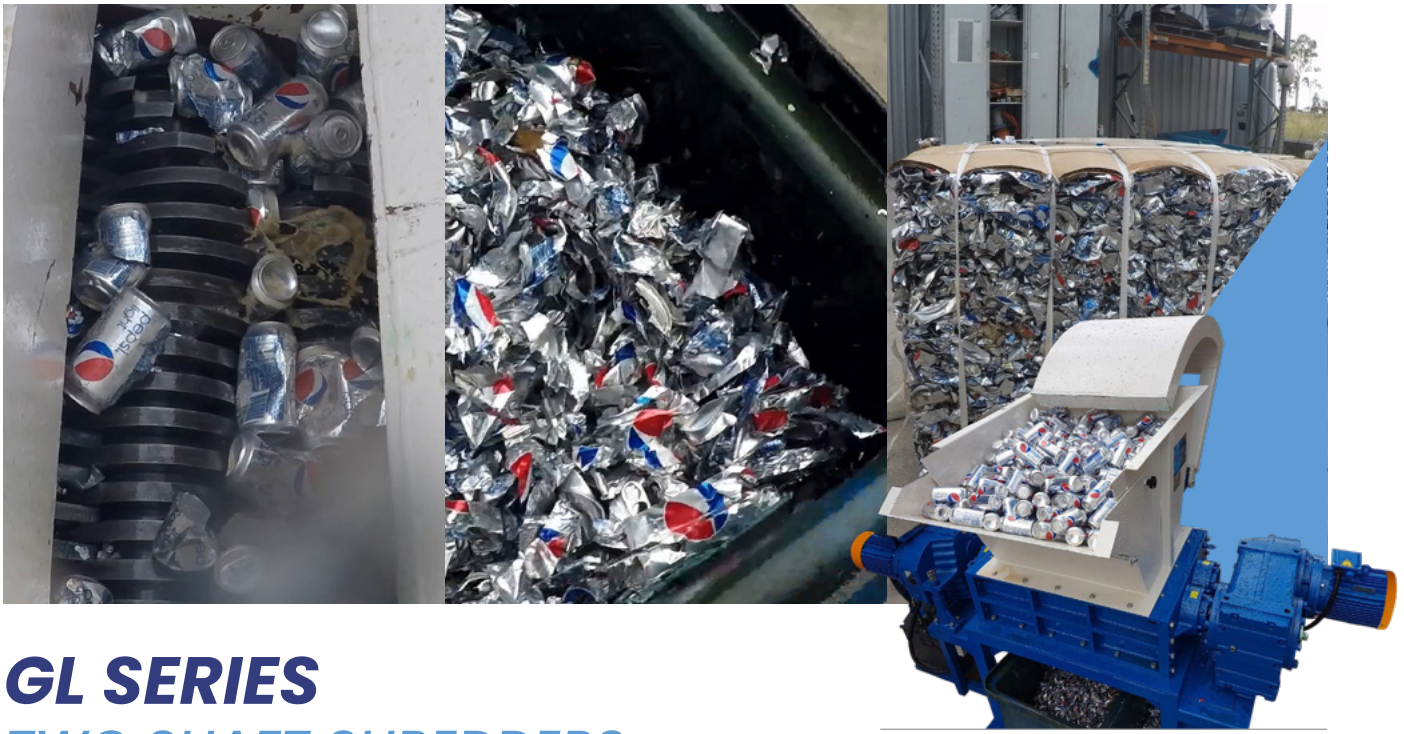




GL SERIES TWO SHAFT SHREDDERS





GL SERIES TWO SHAFT SHREDDERS

The GL Series two shaft shredders are heavy duty machines designed for industrial applications and can be configured to efficiently process a wide range of materials.

Our machines are developed to the highest standard using state of the art technology, ensuring you have a machine that is reliable and efficient.

The GL Series shredders are available in a wide range of sizes and configurations and can be customised to suit your required throughput and sizing.

We can also assist with the development of supply infeed, discharge and plant solutions to integrate with your shredder.

BENEFITS

- Auto-reverse self protect functionality
- Reliable & durable construction
- Easy maintenance
- Suitable for processing multiple products
- Safe & easy operation
- Variety of hook designs available
- Modular Chamber Design with split endplates and bearing housings enabling quick access to key components.
- Advanced Adjustable Sealing System for the bearings.
- Electrical Control Panel with Siemens PLC Control System.

APPLICATIONS

A wide variety of applications include:

- | | |
|-----------|-----------------------|
| • Tyres | • MSW/RDF |
| • E-waste | • Product Destruction |
| • Pallets | • Wood |
| • Paper | • Bottles/Cans |
| • Drums | • Newsprint |



FEATURES THAT GUARANTEE HIGH PERFORMANCE

KEY FEATURES



Rotating Screen

To enable sizing of the output product, the rotating screen is designed to feed oversized material back into the shredding chamber for further shredding to the correct product size.



Hydraulic Pusher

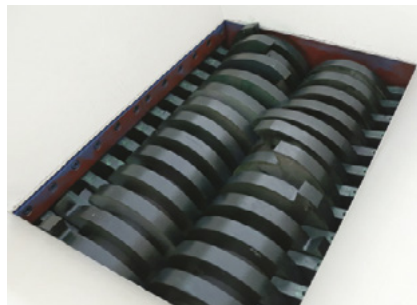
When shredding bulky materials such as plastic drums, the hydraulic pusher is recommended to force-feed the material through the shredder and prevent it from bouncing or bridging on top of the rotors.



Hydraulic Drive System

The hydraulic drive system as opposed to the conventional direct motor drive systems is a huge user benefit; designed to operate in the harshest applications. The hydraulic drive increases torque and the shredder speed can be increased without excessive current peaks whilst the probability of machine damage is substantially reduced. An additional vertical force-feeding ram is available to pass the material onto the rotor from above in order to optimise performance.

This system also maximises throughput and performance.



Blade Variations

To ensure durability and flexibility, we can offer different kinds of blades according to various materials.

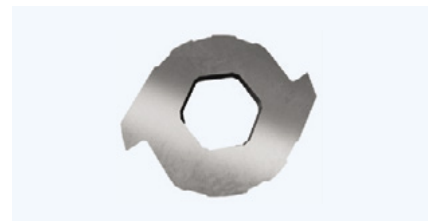
VSD options are available for individual control of blade speeds allowing optimal shredding performance and maximising throughput.

BLADE Types

The blade design and configuration can be specified to suit individual applications and optimise the durability and longevity of the cutting system. The correct selection of blades is essential to the correct performance of the shredder.



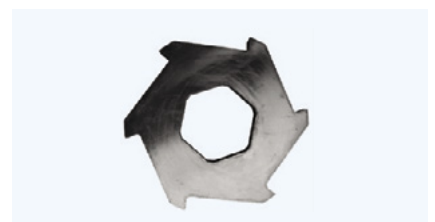
Single-hook Blade



Two-hook Blade

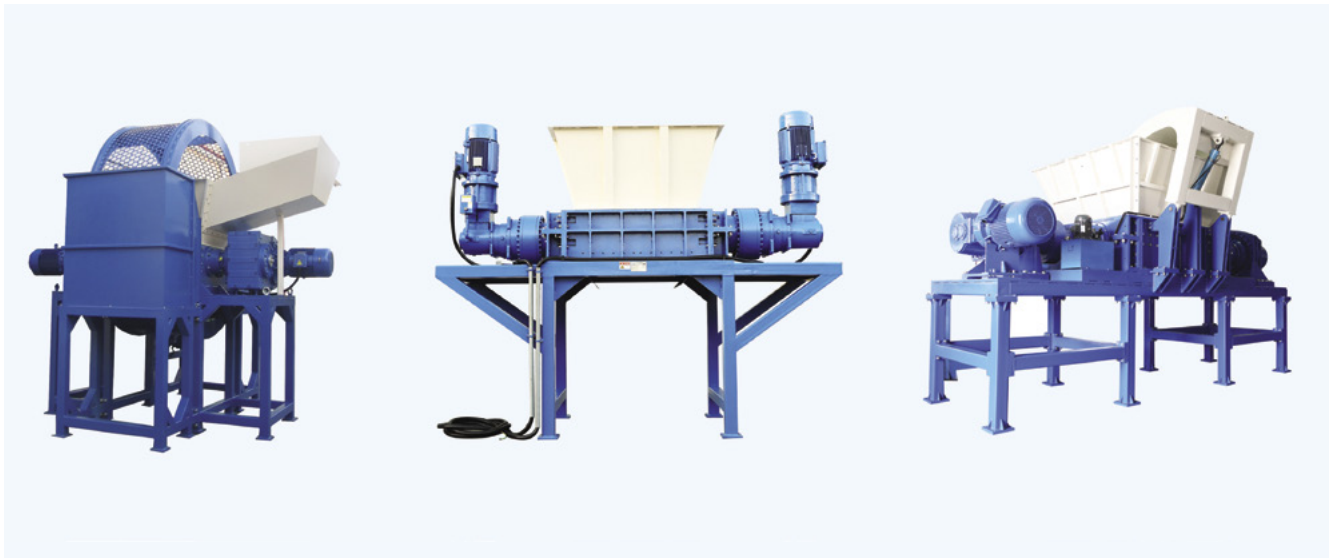


Four-hook Blade



Six-hook Blade





SPECIFICATIONS

Model Item	Dimension L/W/H (mm)	Cutting Chamber L/W (mm)	Number of Cutters (pcs)	Cutter Thickness (mm)	Main Motor Power (KW)	Weight (KG)
GL2140	1892 x 910 x 1911	410 x 470	20	20	7.5KW	1500Kg
GL2160	2658 x 910 x 1911	610 x 470	30	20	5.5Kw + 5.5Kw	2100Kg
GL2180	3018 x 1367 x 1911	810 x 470	40	20	7.5Kw + 7.5Kw	2400Kg
GL3280	2940 x 1816 x 2270	812 x 736	20	40	15Kw + 15Kw	3700Kg
GL32100	3275 x 1946 x 2275	1012 x 736	25	40	22Kw + 22Kw	4100Kg
GL32120	3416 x 1946 x 2275	1213 x 736	30	40	22Kw + 22Kw	4500Kg
GL40100	3334 x 1866 x 2670	984 x 948	20	50	37Kw + 37Kw	6500Kg
GL40130	3716 x 2234 x 2670	1324 x 948	26	50	45Kw + 45Kw	8700Kg
GL40160	4674 x 1770 x 3765	1624 x 948	32	50	45Kw + 45Kw	9200Kg
GL50130	4187 x 2060 x 2702	1612 x 1006	32	50	55Kw + 55Kw	12800Kg
GL50180	5170 x 1866 x 3905	1812 x 1206	36	50	55Kw + 55Kw	13600Kg
GL61180	5404 x 2404 x 3746	1812 x 1490	24	75	75Kw + 75Kw	20200Kg
GL61210	5297 x 2714 x 3537	2112 x 1510	24	75	90Kw + 90Kw	23200Kg

*Please note: Specifications are indicative only and may be subject to change without notice. Equipment is sold with an operation manual and risk assessments relating to the equipment as supplied. It is the responsibility of the purchaser to conduct their own assessments and determine the suitability of the equipment for the intended use. Other models and custom builds available on request.

