



Baler Dimensions

Height	2 675mm
Width	1 630mm
Length	7 670mm
Weight	10.5T
Feed Opening	1 350mm x 1 050mm

Bale Dimensions

Height	1 100mm
Width	1 100mm
Length	1 600mm
Weight (material dependent)	up to 900kg
Number of ties	4

Features

- Hydraulic full eject
- Hardox plated bale chamber
- Bale full and pre-full signals
- Hydraulic end door – vertically raised
- Baling wire holders
- Dual baling pressures
- Bale counter, hour meter
- Anti-jam serrated cutting blades

Optional Extras

- Power-pack upgrade for 56 sec cycle time
- Oil cooler
- Bin Tipper for infeed
- Wall Chutes
- Custom hopper design
- Auto start/stop functions
- Paint upgrade – custom colours

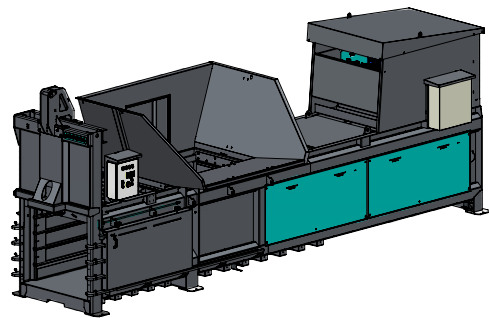
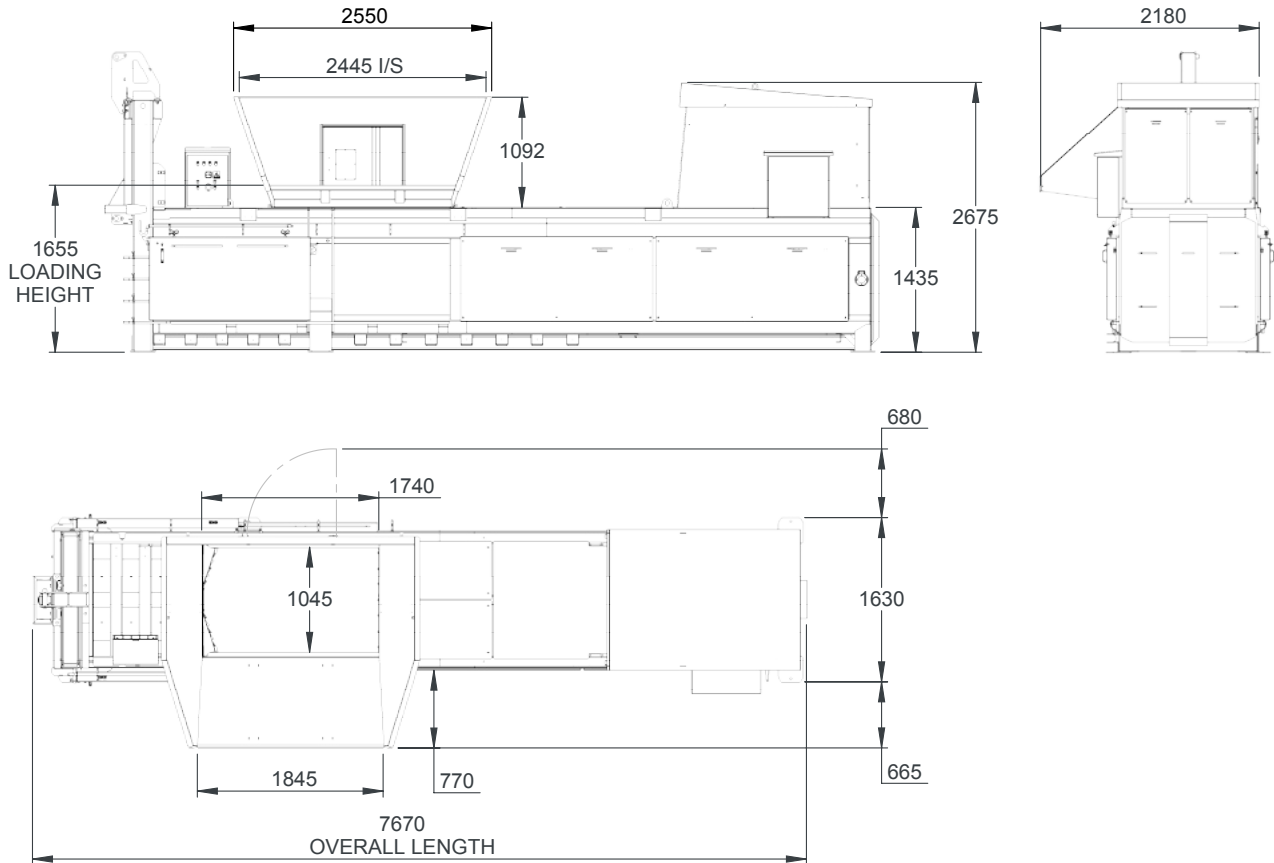
Performance

Power Supply	415 V 3-Phase
Motor	15kW to 18kW 60A
Pressing Force	65T
Cycle Time	90 seconds

[More product info on our website >>](#)



Dimensions and technical information without obligation. Subject to change.



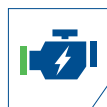
Size Comparison



Bale Weight
Up to 900 Kg



Pressing Force
Up to 65 Ton



Motor
15kW to 18kW 60A



Waste Types
Cardboard,
General Waste &
Processed Food

