



### Baler Dimensions

Height	2 675mm
Width	1 630mm
Length	7 670mm
Weight	10.5T
Feed Opening	1 350mm x 1 050mm

### Bale Dimensions

Height	1 100mm
Width	1 100mm
Length	1 600mm
Weight (material dependent)	up to 900kg
Number of ties	4

### Features

- Hydraulic full eject
- Hardox plated bale chamber
- Bale full and pre-full signals
- Hydraulic end door – vertically raised
- Baling wire holders
- Dual baling pressures
- Bale counter, hour meter
- Anti-jam serrated cutting blades

### Optional Extras

- Power-pack upgrade for 56 sec cycle time
- Oil cooler
- Bin Tipper for infeed
- Wall Chutes
- Custom hopper design
- Auto start/stop functions
- Paint upgrade – custom colours

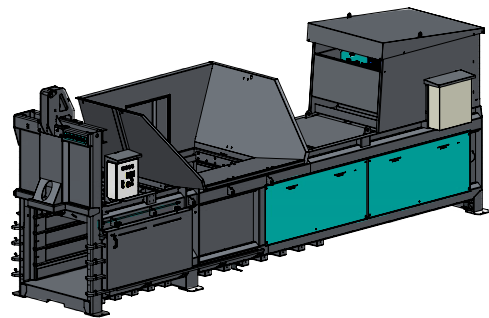
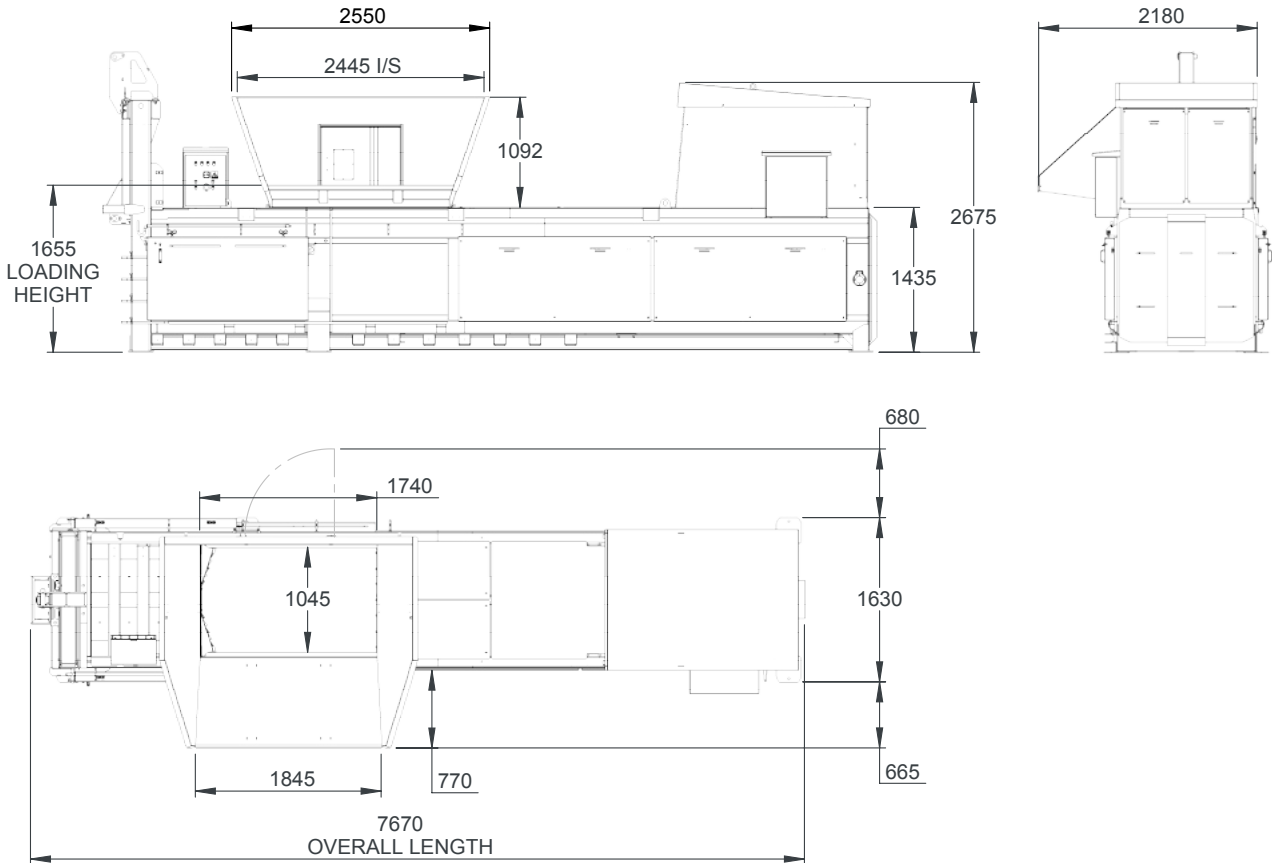
### Performance

Power Supply	415 V 3-Phase
Motor	15kW to 18kW 60A
Pressing Force	80T
Cycle Time	90 seconds

[More product info on our website >>](#)



Dimensions and technical information without obligation. Subject to change.



Size Comparison



**Bale Weight**  
Up to 900 Kg



**Pressing Force**  
Up to 80 Ton



**Motor**  
15kW to 18kW 60A



**Waste Types**  
Cardboard,  
General Waste &  
Processed Food

